



Wilton Road

Kettering, Northants, NN15 5JX

£850 PCM

Available beginning of July is this well present one bedroom mid-terrace house located on the sought after Ise Lodge estate.

Set back behind its own private parking space, the property is entered into the entrance hallway providing access to the kitchen and living room.

Kitchen has a good range of base and wall mounted units, freestanding oven & hob, stainless steel sink & drainer, and spaces for the usual appliances.

Living room is a light airy room and has single French door to the garden.

Upstairs is a double bedroom and three-piece bathroom with shower over.

Externally, to the rear is a private garden laid mainly to lawn with small patio area and gravelled edges. To the front is a parking space for one vehicle.

This property is offered on an un-furnished basis.

Holding Deposit - £196
Council Tax Band - A
EPC Rating - expired rating was a D, new certificate pending

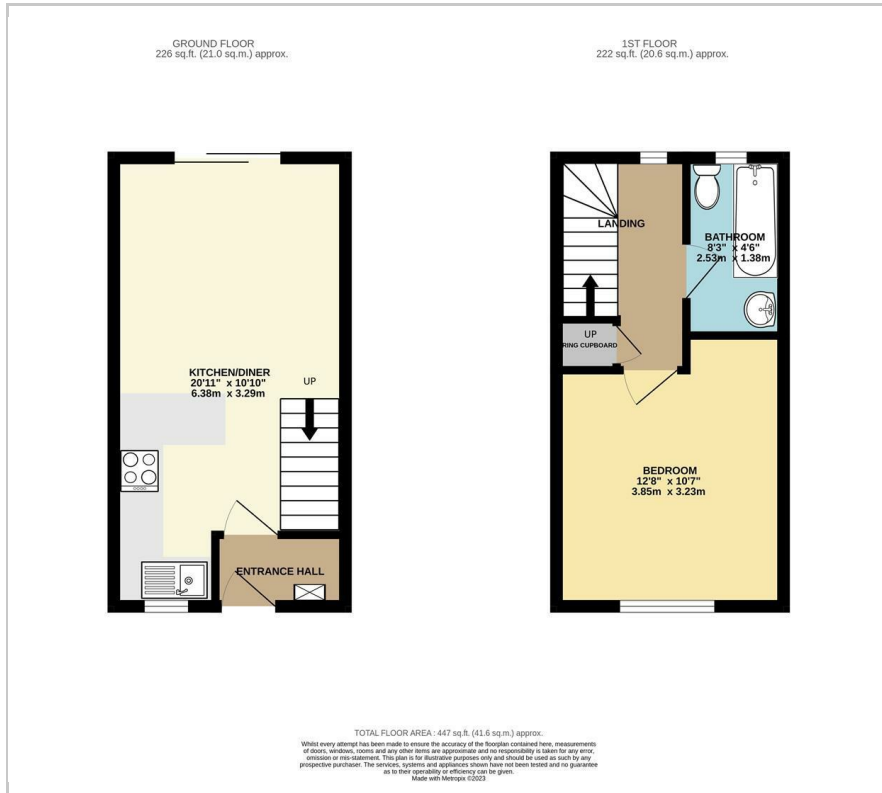
- Location
- Parking
- Close to Local Amenities
- One Bedroom
- Private Garden
- Long Let

Viewing

Please contact our Lucas Lettings Office on 01536 313509 if you wish to arrange a viewing appointment for this property or require further information.



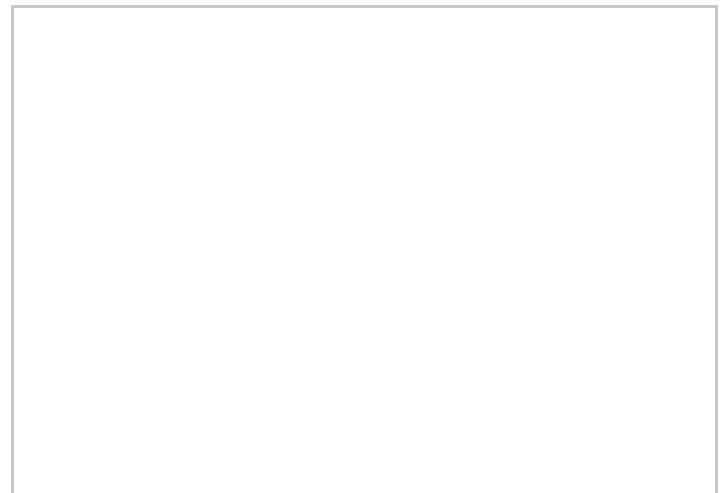
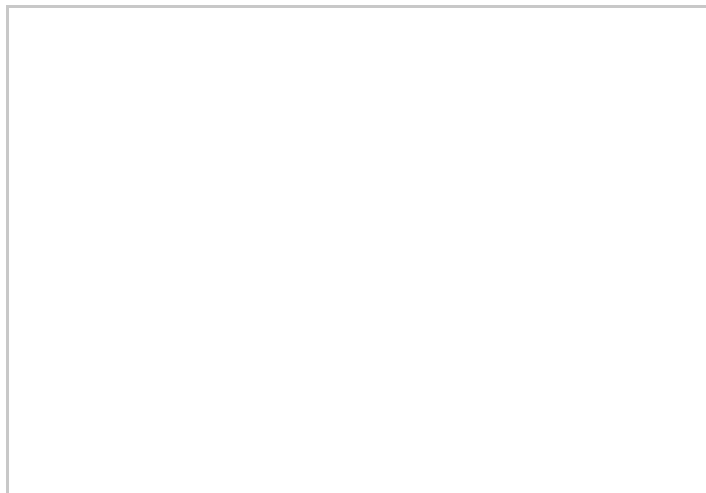
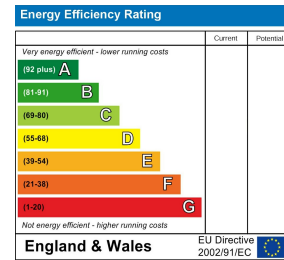
Floor Plan



Area Map



Energy Efficiency Graph



These particulars, whilst believed to be accurate are set out as a general outline only for guidance and do not constitute any part of an offer or contract. Intending purchasers should not rely on them as statements of representation of fact, but must satisfy themselves by inspection or otherwise as to their accuracy. No person in this firm's employment has the authority to make or give any representation or warranty in respect of the property.